



Welfare of Vulnerable People in Rounders

POLICY
Procedures & Guidelines
NRA Clubs & Centres



The National Rounders Association



CONTENTS

Foreword	5
Policy Guidelines	5
Conditions of membership	5
The Club or Centre Welfare Officer	8
Roles and responsibilities	8
Recommended Characteristics	8
Promoting Good Practice	9
First Aid and Treatment of Injuries	10
Transporting children or vulnerable adults away from home	10
Practice To Be Avoided	10
Practice never to be sanctioned	11
Specific points to follow if you are Coaching / officiating Rounders	12
What Constitutes Abuse	13
Neglect	13
Physical Abuse	13
Sexual Abuse	13
Emotional Abuse	14
Abuse of Trust	14
Bullying	14
Identifying and Managing Bullying	15
Reporting	15
Photography	16
Photographing, Videoing and Filming of Children and Vulnerable Adults	16
Concerns about Photographers, Video or Film Operators	16
Publications and the Internet	16
Indications of Abuse	17
What you should do next?	18
What should you do if you have concerns?	18
Recording Information	18
Responding to Disclosures	19
How to listen to a Disclosure	19
Actions to Avoid	20



Responding to a Suspicion or Allegation of Inappropriate Behaviour or Misconduct Against someone who is not a Member the Club or Centre?	20
Against a Member of the Club or Centre	20
Establishing the Basic Facts	20
Responding to a Suspicion or Allegation of Abuse Against someone who is not a Member of the Club or Centre	21
Against a Member of the Club or Centre	22
On receiving information about a member that leads to a suspicion or allegation of abuse	22
Actions for the Club or Centre Welfare Officer when Concerns are reported.	22
Making a Referral in Cases of Suspected and/or Alleged Abuse	23
Possible Outcomes following advice from Police	23
Managing the Member Against Whom the Allegation has Been Made	23
Suspension	23
Managing Allegations	24
Allegations of previous abuse	24
Managing Allegations of Historical Abuse	24
Self-Declaration	24
Criminal Records Bureau (CRB)	24
Good Practice and Observation	24
Sharing concerns with Parents, Guardians or Carers	
Where it is Not Abuse	25
Allegations of Abuse	25
Complaints Procedures	25
Protecting responsible members against accusations	25
Actions to take	26
Flowcharts:	
What to do if you suspect abuse	27
What to do if you are a Welfare Officer	28
Appendixes:	29
Legal Framework	30
Sources & Contacts	31, 32
Incident Report Form	33-37
Breaches of Welfare	38
Application for Photography	39-40
Photography Consent Form	41
Conditions of NRA and Club or Centre Membership.	42
The Expulsion Process	43
Disciplinary Procedure Flowchart	44



Foreword

The Children Act 1989 indicates that anyone who has care of children should "do what is reasonable in all circumstances for the purpose of safeguarding or promoting the child's welfare".

The National Rounders Association (NRA) has produced these procedures and guidelines with reference to the DOH document entitled "Working Together - To Safeguard Children 1999", as a result of increased awareness of a general social problem rather than an increase in malpractice within our sport and stem from the following principles: Welfare of Vulnerable People

POLICY GUIDELINES

The National Rounders Association

The welfare of vulnerable members, both adults and children, is the first consideration.

All members have the right to be protected from bad practice, neglect, bullying and all forms of emotional and physical abuse.

Suspicious and allegations of inappropriate behaviour will be taken seriously and responded to swiftly and appropriately. It is the duty of all members suspecting inappropriate behaviour and actions to act on any concern.

As defined in the Children Act 1989, anyone under the age of 18 years should be considered as a child for the purposes of this Policy

To treat all members fairly, equitably and without prejudice.

Not to participate in or tolerate behaviour that frightens, degrades, embarrasses, demoralises or negatively affects a members' self esteem

Not to tolerate acts of aggression

Photography - Members should be aware that the recording of photographic images might be inappropriate.

The members of the National Rounders Association should not discriminate on the grounds of gender, marital status, race, colour, disability, sexuality, age, occupation, religion or political opinion.

Coaches and Officials, Club or Centre Officers will be made aware of good practice with a specific Welfare course available - free of charge, together with appropriate documentation, coaching and support from HQ, to ensure that Club or Centres are able to implement the Welfare Policy.

Awareness of these issues, and the adherence to these simple guidelines, will help maintain professionalism and safeguard good practice, secure the protection of both the vulnerable and those responsible for them, from accusations arising from misinterpretation of innocent actions



If the application of these principles is to be successful, the NRA would ask all Club or Centres to ensure that they are distributed and discussed at both Committee and general meetings.

Any Club or Centre may decide upon the type of coaching offered and to what age groups but to ensure the welfare of children (this shall also relate to all vulnerable people) the NRA asks that all members observe and promote its policies with regard to the "Welfare of Vulnerable People".

Finally, please remember that the NRA will support any member who, in good faith, reports his or her concerns that a child is at risk of, or may actually be, being abused.

This document has been developed to highlight the areas for potential abuse in the instruction & Conduct of Rounders. It is aimed both at providing the child (and adult member) with a safe environment in which to enjoy the sport and also to protect those responsible for their care from the risk of accusation of abuse.

It should also be remembered that adulthood is not an absolute cure for vulnerability.

Many sports environments provide a relaxed and "safe" place for those who are abused outside of the sport. Rounders Clubs or Centres may develop such a relationship of mutual trust and respect with their player) that they may hear of abuse occurring outside of the direct influence of the Club or Centre. As responsible citizens it is our duty to protect our friends from abuse wherever it may occur. The information and guidance given within this document therefore applies to situations that occur outside the Club or Centre but come to our attention as a result of our Club or Centre activities as much as to situations that occur within the Club or Centre. Indeed the information provided here also applies to our everyday lives outside of the NRA.

Conditions of membership within the NRA

All reasonable steps must be taken to ensure that people with convictions or past history of an inappropriate nature are prevented from significant contact with children or vulnerable adults. Vulnerable adults potentially mean all members.

Controlling access to children and vulnerable adults

Anyone may have the potential to abuse children in some way and it is important that all reasonable steps are taken to prevent unsuitable people from working with children and also vulnerable adults. The particular circumstances of individual cases need to be taken into account.

The fundamental principle is that those in charge of activities involving young people must take all reasonable steps to satisfy themselves as to the suitability of those who are given significant contact to the children and vulnerable adults in their care.

Self-Declaration

Members in positions within an NRA Club or Centre that involve significant access to young people in coaching and supervision are typically coaches and Club or Centre Officers. For such members, as a minimum requirement, a Self-Declaration should be completed. This would ask for any information about a criminal record or other matter that has a bearing on their suitability to work with children to be revealed (e.g. previous investigations by police or social services or disciplinary investigations in relation to contact with children).



Criminal Records Bureau (CRB) checks

This is a more reliable way to determine whether the Criminal Records Bureau holds any relevant information on a member. Both these procedures are flawed!

Self-declaration relies on the honesty of the applicant to reveal information in full.

CRB checks are only valid on the day of issue.

Both procedures can only reveal past history.

Good Practice and observation

This is the most reliable way to strive to ensure the safety of all vulnerable people within the NRA Club or Centre environment. For Club or Centres adopting good practice, following the guidelines of the Policy, this will promote vigilance where inappropriate behaviour and early signs of potential problems can be spotted and dealt with.

Certainly Self-Declaration should be adopted as a minimum requirement; CRB checks are another process that Club or Centres can consider if appropriate. It is important to emphasise that the absence of any relevant disclosure emerging from this vetting process does not guarantee that the individual is safe to have significant contact with children, so it should not be relied on excessively. It is only one of a number of factors in the assessment of a persons' suitability. For more information of the Self Declaration process and the procedure for obtaining Criminal Records Bureau disclosures, contact the NRA National Office



The Club or Centre Welfare Officer

Role and Responsibilities

The Club or Centre Welfare Officer has the main responsibility for managing child and vulnerable adult protection issues within an NRA Club or Centre. The role and responsibilities of the Club or Centre Welfare Officer are detailed below. Specific responsibilities in relation to allegations against members are detailed later in this publication.

Role and Responsibilities of the Club or Centre Welfare Officer

Within the Club or Centre the Club or Centre Welfare Officer will:

Implement and promote the NRA Welfare Policy and procedures.

Report cases, concerns and action taken to the NRA Welfare Officer

Regularly report to the Club or Centre Committee.

Act as the main contact within the Club or Centre with NRA HQ for the protection of children and vulnerable adults.

Provide information and advice to Club or Centre members on the protection of children and vulnerable adults.

Encourage good practice and support of procedures to protect children and vulnerable adults within the Club or Centre.

Communicate with members on issues of child and vulnerable adult protection.

Keep abreast of developments and understand the latest information on data protection, confidentiality and other legal issues that impact on the protection of children and vulnerable adults.

Establish and maintain contact with the NRA Lead Welfare Officer.

Follow the Procedures and Guidelines detailed in this publication in cases of incidents and maintain confidential records of reported cases and action taken and liaise with the statutory agencies and NRA HQ to ensure they have access to all necessary information.

Attend coaching on the protection of children and vulnerable adults.

Monitor and review the Welfare Policy and Procedures for their Club or Centre.

Recommended Characteristics of the Club or Centre Welfare Officer:

Have an understanding of the issues affecting children and vulnerable adults and the sensitive way in which they must be managed.

Be able to communicate the implications of protecting children and vulnerable adults to all members.

Be able to communicate with children and vulnerable adults.

Be supportive of the introduction of the NRA Welfare of Vulnerable People Policy.

Have an understanding and appreciation of the need to respect confidentiality.

Be able to follow procedures and recognise when to seek advice and not rely solely on their own judgement.

Be willing to challenge members who do not comply with the NRA Welfare of Vulnerable People Policy.



Promoting Good Practice

Abuse may occur within or outside your club session. Don't be afraid to report your concerns, whatever their origin.

Some situations are more open to misinterpretation by those unfamiliar with our methods of teaching/leadership. The following points are raised so that you are aware of where misunderstanding has occurred in the past and, by taking the actions recommended you can limit the risk of your innocent actions leading to an accusation against you.

General Code of Conduct for the Protection of Children and Vulnerable Adults

This code of conduct details the types of practice required by all members of the NRA when in significant contact with children or vulnerable adults. The types of practice are categorised into good practice; practice to be avoided and practice never to be sanctioned. Suspicions or allegations of non-compliance of the Code by a member will be investigated by the NRA Welfare Officer and if necessary, dealt with through the NRA Disciplinary Procedure for misconduct or through Responding to a Suspicion or Allegation of Abuse against a Member of the NRA.

Good Practice

The NRA supports and requires the following good practice by members when in significant contact with children and vulnerable adults.

When working with children or vulnerable adults:

Make activities fun, enjoyable and promote fair play.

Always work in an open environment e.g. avoid private or unobserved situations and encourage an open environment for all activities.

Treat all children and vulnerable adults equally, with respect and dignity.

Put the welfare of each child or vulnerable adult first before achieving performance goals.

Be an excellent role model.

Give enthusiastic and constructive feedback rather than negative criticism.

Ensure that if any form of manual or physical support is required for a child or vulnerable adult, it is provided openly, the child or vulnerable adult is informed of what is being done and their consent is obtained.

Deliver educational instruction first verbally; secondly role-modelled; and thirdly, and only if necessary, with hands on - which must be accompanied by telling the child or vulnerable adult where you are putting your hands and why it is necessary and obtaining their consent.

Involve parents, guardians and carers wherever possible.

Build balanced relationships based on mutual trust that empower children and vulnerable adults to share in the decision-making process.

Recognise the developmental needs and capacity of children and vulnerable adults and avoid excessive coaching and either pushing them against their will or putting undue pressure on them.



First Aid and Treatment of Injuries:

If, in your capacity as a member of the NRA, a child or vulnerable adult requires first aid or any form of medical attention whilst in your care, then the following good practice must be followed:

Be aware of any pre-existing medical conditions, medicines being taken by participants or existing injuries and treatment required.

Keep a written record of any injury that occurs, along with the details of any treatment given.

Where possible, ensure access to medical advice and/or assistance is available. Ideally, only those with a current recognised First Aid qualification should respond to any injuries.

Where possible any course of action should be discussed with the child/vulnerable adult, in language that they understand and their permission sought before any action is taken.

In more serious cases, assistance must be obtained from a medically qualified professional as soon as possible.

The child' or vulnerable adults' parents/guardians or carers must be informed of any injury and any action taken as soon as possible, unless it is in the child' or vulnerable adults' interests and on professional advice not to do so.

A Notification of Accident Form must be completed and signed and passed to the Club or Centre Welfare Officer as soon as possible.

Transporting children or vulnerable adults away from home:

If it is necessary to provide transport or take children or vulnerable adults away from home the following good practice must be followed:

Where practicable, request written parental/guardian consent if members are required to transport children or vulnerable adults.

Always tell another member that you are transporting a child, give details of the route and the anticipated length of the journey.

Ensure all vehicles are correctly insured.

All reasonable safety measures are taken, e.g. children in the back seat, seatbelts are worn.

Ensure, where possible, a male and female accompany mixed groups of children or vulnerable adults.

These adults should be familiar with and agree to abide by the NRA Welfare of Vulnerable People Policy

Always plan and prepare a detailed programme of activities and ensure copies are available for other members and parents/guardians.

Practice To Be Avoided

In the context of your role within the Club or Centre the following practice should be avoided:

Avoid having 'favourites' - this could lead to resentment and jealousy by other children or vulnerable adults and could lead to allegations.

Avoid spending excessive amounts of time alone with children or vulnerable adults away from others.

Ensure that when children or vulnerable adults are taken away from home, adults avoid entering their rooms unless in an emergency situation or in the interest of health and safety. If it is necessary to enter rooms, the door should remain open, if appropriate.

Avoid taking children or vulnerable adults to your home.

Avoid, where possible, doing things of a personal nature for children and vulnerable adults that they can do for themselves.



Important Note:

It may sometimes be necessary for members to do things of a personal nature for children or vulnerable adults, These tasks should only be carried out with the full understanding and consent of the child or vulnerable adult and where possible their parents/guardians. It is important to respect their views. If a person is fully dependent on you, talk with him/her about what you are doing and give choices where possible, particularly so if you are involved in any dressing or undressing or where there is physical contact, lifting or assisting a child or vulnerable adult to carry out particular activities. Do not take on the responsibility for tasks for which you are not appropriately trained.

Practice never to be sanctioned

In the context of your role within the NRA Club or Centre, the following practices should never be sanctioned:

Never engage in sexually provocative games, including horseplay.

Never engage in rough or physical contact.

Never form intimate emotional or physical relationships with children or vulnerable adults.

Never allow or engage in touching a child or vulnerable adult in a sexually suggestive manner.

Never allow children or vulnerable adults to swear or use sexualised language unchallenged.

Never make sexually suggestive comments to a child or vulnerable adult, even in fun.

Never reduce a child or vulnerable adult to tears as a form of control.

Never allow allegations made by a child or vulnerable adult to go unchallenged, unrecorded or not acted upon.

Never share a room with a child or vulnerable adult for sleeping accommodation.

Never invite or allow children or vulnerable adults to stay with you at your home.

Important Note:

In special cases sharing may be required for health and safety reasons. If so, explain why this is necessary to the child/vulnerable adult and their parent or guardian and seek their consent.

Where possible ensure that at least two adults, preferably male and female are in the room.



Specific points to follow IF YOU ARE COACHING/OFFICIATING

When coaching/officiating vulnerable people to play you should ensure that you are not left alone with your players - either during the club session or in the changing rooms afterwards.

The suggestions made below, for those involved in Rounders, should also be considered whenever working with children.

Physical contact

Certain skills may require close physical contact, such as Batting etc. Before taking hold of your student in a manner that may be misinterpreted teach the skill away from the player (do a dry run) and give a verbal commentary to the whole group explaining what you are going to do.

Guard against the effects of cold, especially when coaching in inclement weather.

Where children are involved, the parents should be aware of what will be required of their children and agree to abide by the Club or Centre policies before coaching commences.

Specific help and advice on this issue is available from the NRA Welfare Officer via HQ.

Avoid coaching in a one to one situation. (Always have an independent observer to support your position in case of misinterpretations of your actions)

Ensure adequate supervision

NRA recommend a maximum coach / student ratio of 1:15

(Specific exceptions to this rule may be detailed in the player coaching programme - but coaches/umpires should be aware that whatever is stated is a MINIMUM requirement and should only be applied in ideal conditions)

This sport often involves the instruction of young children and the following are a few simple guidelines for the coaches to follow in addition to those under the previous heading:

Don't be alone with your players.

Encourage parents to attend sessions

Don't mix age groups. By mixing adult and child sessions you could be offering the opportunity for abuse - and this should therefore be avoided whenever possible.

If you accidentally hurt a child, he/she seems distressed in any manner, appears to be sexually aroused by your actions, or misunderstands or misinterprets something that you have done, record any such incident as soon as possible to another colleague and make a brief note of it.



What Constitutes Abuse?

"Abuse" is a term used to describe the ways in which vulnerable people are harmed, usually by adults, and often by people they know and trust. Children and vulnerable adults may be abused within their family, at school, and sometimes in a sporting environment. In each type of abuse listed below the definition understood by the law is set out with bullet points - the way it might apply to the NRA situation follows below.

There are five main forms of player abuse:

Physical, Sexual, Emotional, Neglect and Abuse of Trust, Neglect

Neglect

Includes situations in which:

A persons' basic physical needs (e.g. food, warm clothing) are not met.

A vulnerable person is constantly left alone and/unsupervised. (This may or may not be at home)

Neglect in the NRA situation could include a coach, official or play leader not ensuring the players' safety, exposing them to undue cold or unnecessary risk of injury. There is considerable heat loss associated with Rounders in inclement weather. Responsible members should ensure that protection is adequate and exposure minimal.

The NRA recommends buddy pairings and maximum coach/student ratios to allow effective monitoring and instruction in all conditions.

Physical Abuse

Includes situations where adults:

Physically hurt or injure children or other vulnerable people (e.g. by hitting, shaking, squeezing, biting or burning).

Give, or encourage young people to take alcohol, cigarettes, inappropriate drugs or poison.

Use excessive or inappropriate coaching methods.

In the NRA environment, physical abuse might occur when the nature and intensity of coaching or activity exceeds the capacity of the student. This applies especially to children where the body is immature and still growing.

The sport of Rounders is physically demanding and gradual coaching is needed to develop the necessary fitness. However, Rounders is also a recreational sport and Olympic fitness standards are not always required. Care must be exercised in the application of Rounders tests and requirements to manhandle heavy equipment

Sexual Abuse

Includes situations in which people are used to meet the sexual needs of others:

Full sexual intercourse, masturbation, oral sex or fondling.

Showing vulnerable persons pornography, or taking photographs of them for pornographic purposes.

Sports, like Rounders, which can involve physical contact with others, could potentially create situations where sexual abuse, such as fondling or inappropriate touching, could occur or be deemed to occur.

The power of the coach/senior player official over young players/players, if misused, may also lead to more serious abusive situations developing.



Emotional Abuse

Includes situations in which:

There is a persistent lack of attention shown to the vulnerable person.

The vulnerable person is overprotected, preventing them from socialising.

Vulnerable people are frequently shouted at or taunted. This may occur in Rounders if the student is subjected to constant criticism, bullying or unrealistic pressure to perform consistently to high expectations. We do not all acquire skills or achieve consistency neither at the same rate nor to the same degree and Rounders is undertaken for enjoyment not just to seek perfection of performance.

Abuse of Trust

(mainly 16 - 18 year olds or any vulnerable players)

A relationship of trust occurs if one party in a relationship is in a position of power or influence over the other by virtue of their work or nature of their activity. Abuse of this trust may occur if a consensual sexual relationship develops when the other party may be considered particularly vulnerable and susceptible to favour or advancement by the person in the position of trust.

A sexual relationship itself will be intrinsically unequal within a relationship of trust and this is why it is unacceptable.

Bullying

It is also important to recognise bullying as a further form of abuse:

Is not easy to define, can take many forms and is usually repeated over a period of time. The three main types of bullying are: physical (e.g. hitting or kicking), verbal (e.g. racist or homophobic remarks, threats and name calling) and emotional (e.g. isolating an individual from activities).

They will all include:

Deliberate hostility and aggression towards the victim

A victim who is weaker than the bully or bullies

An outcome, which is always painful and distressing for the victim.

Bullying behaviour may also include:

Other forms of violence

Sarcasm, spreading rumours, persistent teasing or theft.

Tormenting, ridiculing, humiliation.

Racial taunts, graffiti, gestures.

Unwanted physical contact or abusive or offensive comments of a sexual nature.

Emotional and verbal bullying is more likely to be found in the NRA than physical violence.

These forms of bullying are often the most difficult to cope with - or to prove. It is important that all Club or Centres develop their own anti-bullying policy to which all its members (and parents/carers) subscribe.

In order to establish an anti-bullying policy every Club or Centre (or NRA member) must be prepared

to:

Take the problem seriously

Investigate any incidents

Talk to bullies and victims separately

Decide on appropriate action, such as:



Obtain an apology from the bully (ies) to the victim
Inform the parents of the bully (ies) if appropriate to do so
Insist on the return of items "borrowed" or stolen
Insist that bullies compensate their victims

Hold Club or Centre discussions about bullying
Provide support for those supervising the bully (ies)

Identifying and Managing Bullying

The lives of many people are made miserable by bullying. Victims of bullying can feel lonely, isolated and deeply unhappy. It can have a devastating effect on a child or vulnerable adults' Self-esteem and destroy their self-confidence and concentration. They may become withdrawn and insecure, more cautious and less willing to take any sort of challenge. They may feel it is somehow their fault or that there is something wrong with them and at worst cause depression and/or feelings of worthlessness that lead to suicide.

To ensure NRA Clubs or Centres create an atmosphere where bullying of children and vulnerable adults is unacceptable and to help members manage bullying issues, guidelines for identifying and managing bullying have been developed.

Any suspicions or allegations of bullying of a child or vulnerable adult against a member will be dealt with through the Club or Centre Disciplinary Procedures and/or Responding to a Suspicion or Allegation of Abuse against a Member of the NRA.

Reporting

If members have concerns about an incident involving a child or vulnerable adult that seems untoward or unusual they must report their concerns as soon as possible to the Club or Centre Welfare Officer. Parents should also be informed of the incident as soon as possible unless it is not in the child's or vulnerable adults' interests to tell them.

Report, record and inform if the following occur:

If you accidentally hurt a child, or vulnerable adult.

If a child or vulnerable adult, seems distressed in any manner.

If a child or vulnerable adult misunderstands or misinterprets something you have said or done.

If a child or vulnerable adult appears to be sexually aroused by your actions.

If a child or vulnerable adult needs to be restrained.

Parents or carers should also be informed of the incident at the first opportunity (This is more for the protection of the responsible member against later allegations than for anything else)



Photography

Photographing, Videoing and Filming of Children and Vulnerable Adults

There is evidence that some people have used sporting events as an opportunity to take inappropriate photographs or film footage of children and vulnerable adults. The following procedures have been developed to protect children and vulnerable adults.

The following is required for NRA activities or events where children or vulnerable adults are participating.

Where appropriate all materials promoting the Club or Centre activities shall state that only accredited photographers will be present.

Consent from the parent/guardian for photographing, videoing and/or filming of a child or vulnerable adult must be obtained prior to the activity.

Where possible anyone wishing to use photographic/film/video equipment at a venue must obtain the approval of the Club or Centre Welfare Officer/Club or Centre Committee.

No unsupervised access or one-to-one sessions are to be permitted unless the child or vulnerable adult, parent/guardian and the organisation have approved this in advance.

The Club or Centre should reserve the right at all times to prohibit the use of photography, film or video at any event or activity with which it is associated.

The requirements above are publicly promoted to ensure all people present at the event or activity understand the procedure and are aware of whom to contact if concerned.

Concerns about Photographers, Video or Film Operators

Any concerns with photographers or video or film operators are to be reported to the Club or Centre Welfare Officer/Club or Centre Officer and where relevant, the Police.

Publications and the Internet

Children or Vulnerable Adults in Publications and on the Internet Sport websites and publications provide excellent opportunities to broadcast achievements of individuals to the world and to provide a showcase for the activities of young people or vulnerable adults. In some cases, however, displaying certain information about children and vulnerable adults could place them at risk. The following procedure should be followed to ensure NRA Club or Centre publications and NRA Club or Centre information on the Internet do not place children and vulnerable adults at risk. NRA Club or Centre publications and NRA Club or Centre information on the Internet should adhere to the following:

Publications or information on an Internet site must never include personal information that could identify a child or vulnerable adult e.g. home address, e-mail address, telephone number of a child or vulnerable adult.

Before publishing any information about a child or vulnerable adult, written consent must be obtained from the child or vulnerable adult's parent/guardian. If the material is changed from the time of consent, the parents/guardians must be informed and consent provided for the changes.

The content of photographs or videos must not depict a child or vulnerable adult in a provocative pose or in a state of partial undress other than when depicting a normal and appropriate Rounders/activity. Children and vulnerable adults must never be portrayed in a demeaning or tasteless manner.

For photographs or videos of groups of children or vulnerable adults ensure that only the group is referred to, not individual members. Credit for achievements by a child or vulnerable adult are to be restricted to first names.

All published events involving children or vulnerable adults must be reviewed to ensure the information will not put children or vulnerable adults at risk. Any publications of specific meetings or child/vulnerable adult events must not be distributed to any individuals other than to those directly concerned.



Particular care must be taken in publishing photographs, film or videos of children or vulnerable adults who are considered particularly vulnerable e.g. the subject of a child or vulnerable adult protection issue or a custody dispute.

Particular care is to be taken in publishing photographs, films or videos of children or vulnerable adults with physical, learning and/or communication or language disabilities, as they could be particularly vulnerable to abuse.

Important Note:

Any concerns or enquiries about publications or Internet information should be reported to NRA HQ Welfare Officer.

Indications of Abuse

Even for those experienced in the field it is not always easy to recognise a situation where abuse may occur or has already taken place. It is acknowledged that NRA members are not experts at such recognition and they are therefore encouraged to discuss any concern about a players' welfare immediately with the person in charge - this might be the Head Teacher of a school, the Rounders Officer of the Club or Centre or the Manager of the sports facility. You may also seek the advice of the NRA Welfare Officer via HQ or on nra.office@btopenworld.com.

Alternatively you may prefer to contact the NSPCC helpline for professional advice on 0800 800 500. If children are involved:

It is the responsibility of the concerned member to ensure that appropriate advice is obtained from the local Social Services Department or the NSPCC. If the person in charge is not available, or the concern is about the person in charge, the person in receipt of the information should contact the Social Services direct.

Indications of abuse may include:

The child says that she or he is being abused, or another person says they believe (or actually know) that abuse is occurring.

The child has an injury for which the explanation seems inconsistent.

The child's behaviour changes, either over time or quite suddenly, and he or she becomes quiet and withdrawn, or alternatively becomes aggressive.

The child appears not to trust adults, e.g. A parent or club member with whom she or he would be expected to have, or once had, a close relationship, and does not seem to be able to make friends.

He or she becomes increasingly neglected in appearance, or loses or puts on weight for no apparent reason.

The child shows inappropriate sexual awareness for his/her age and sometimes behaves in a sexually explicit way.

It should be recognised that this is not an exhaustive list and that the presence of one or more indicators is not proof that abuse is taking place.

Remember that some people may have physical or learning difficulties making them especially vulnerable to abuse and may have difficulties in communicating what has happened to them.

Suspicion of Abuse of Trust with over 16 year olds should also be reported, using the recommended procedure, to NRA HQ

Please remember - it is not your responsibility to decide whether a person is being abused but we are asking you to act on your concerns.



What you should do next?

It is not your responsibility to decide whether abuse has taken place or not, however you should pass on the information to an appropriate authority.

In an NRA Club or Centre, you should notify the Rounders Officer or pass your concerns directly to the Welfare Officer at NRA HQ.

Ensure that all of the information has been documented (There is an Incident Report Form included with this booklet to help you to remember all of the important points of information you may be asked about at a later time) see Appendix 3.

Severe and obvious cases of abuse should be reported directly to the local Social Services Department who will take responsibility for further actions.

The Social Services Department has a statutory duty under The Children Act 1989 to ensure the welfare of a child. When a child protection referral is made, their staff have a legal responsibility to investigate. This may involve talking to the child and their family, and gathering information from other people who know the child. Enquiries may be carried out jointly with the Police. Clearly then concerns about children must not be taken lightly.

What should you do if you have concerns?

Talk to parents/carers about the concerns if you think that there may be an obvious explanation - such as examination pressures.

If the concerns involve the parents/carers then you should talk to the person in charge (Rounders Officer, Club or Centre Officer etc.) Notify NRA HQ or your Area/Regional Coach as appropriate.

1) Ensure that you record all relevant information.

2) Keep a copy of all the information recorded.

If you are unsure: Call NRA HQ or NSPCC 24-hour Helpline 0800 800 500

Recording information

It is important that information about your concerns should be as helpful and accurate as possible. Such information may need to be passed to the Social Services Department or the Police, hence the necessity for making a detailed record.

Information should include:

The nature of the allegation outlining the type of abuse suspected.

A description of any injuries or bruising: use simple descriptions and non-medical terms.

The child's account, if it can be given, of what has happened and how injuries may have occurred.

Take care to listen and record what the child says rather than put your own interpretation of events.

Any times, dates or other relevant information.

A clear distinction of what is fact, opinion or hearsay.

Reporting the matter to the Police or Social Services Department should not be delayed by attempts to obtain more information. Wherever possible, referrals telephoned to the Social Services should be confirmed in writing within 24 hours. A record should also be made of the name and designation of the Social Services member of staff or police officer to whom the concerns were passed, together with the time and date of the call, in case any follow-up is needed.

All such information should be registered with the Welfare Officer at NRA HQ.



Responding to Disclosures

Information you receive about or from a child or vulnerable adult may fall into one of the following categories:

1. Suspicion or allegation of misconduct against a member of the Club or Centre
2. Suspicion or allegation of abuse against a member of the Club or Centre
3. Suspicion or allegation of inappropriate behaviour against someone who is not a member
4. Suspicion or allegation of abuse against someone who is not a member

If unclear about the nature of the information (and therefore which category the disclosure falls into) advice must be sought from the NRA Welfare Officer, the Police or Social Work Department.

It is not the responsibility of anyone from the Club or Centre to decide whether or not a child or vulnerable adult has been abused. It is however everyone's responsibility to report concerns.

It is very important that the Club or Centre members understand what is meant by the term 'abuse.'

The different types of abuse are:

Emotional Abuse

Neglect

Physical Abuse

Sexual Abuse

Negative Discrimination (including racism)

Bullying (includes bullying by gangs; bullying by family members; physical bullying; verbal bullying; teasing; and harassment) team members.

The definitions for the types of abuse and signs that may suggest abuse are detailed earlier in this booklet.

How to Listen to a Disclosure

It is important to listen carefully to the information a child or vulnerable adult discloses. When listening to a disclosure the following good practice is required:

React calmly so as not to frighten the child/vulnerable adult.

Listen to the child/vulnerable adult.

Do not show disbelief.

Tell the child/vulnerable adult that he/she is not to blame and that he/she was right to tell.

Take what the child/vulnerable adult says seriously, recognising the difficulties inherent in interpreting what a child/vulnerable adult says, especially if they have a speech disability and/or differences in language.

Do not pre-suppose that the experience was bad or painful - it may have been neutral or even pleasurable.

Always avoid projecting your own reactions onto the child or vulnerable adult.

If you need to clarify, keep questions to the absolute minimum to ensure a clear and accurate understanding of what has been said.

If you need to clarify or the statement is ambiguous, use open-ended, non-leading questions.

Do not introduce personal information from either your own experiences or those of other children or vulnerable adults.

Reassure the child or vulnerable adult.



Actions to Avoid

When receiving a disclosure:

- Avoid panic.
- Avoid showing shock or distaste.
- Avoid probing for more information than is offered.
- Avoid speculating or making assumptions.
- Avoid making negative comments about the person against whom the allegation has been made.
- Avoid approaching the individual against whom the allegation has been made.
- Avoid making promises or agreeing to keep secrets.
- Avoid giving a guarantee of confidentiality.

Responding to a Suspicion or Allegation of Inappropriate Behaviour or Misconduct against someone who is Not a Member the Club or Centre

In the course of your role within the Club or Centre a child or vulnerable adult may disclose information to you about a person who is not a member that leads to a suspicion or allegation of inappropriate behaviour or misconduct. If the disclosure is about an incident that occurred during a Club or Centre event or activity:

- Listen to the child as detailed above.
- Acknowledge the information received.
- Pass the information to both the manager of the event or activity and the Welfare officer and, if appropriate, the parents/guardians/carers of the child or vulnerable adult
- Make a full written record of the disclosure on the day you receive the disclosure
- Sign and date the record then pass it to the NRA Welfare Officer.

Responding to a Suspicion or Allegation of Inappropriate Behaviour or Misconduct against a Member of the Club or Centre

If you receive a disclosure that leads to a suspicion or allegation of inappropriate behaviour or misconduct against a member:

- Listen to the child as detailed above.
- Acknowledge the information received.
- Consult the Welfare of Vulnerable People - Procedures and Guidelines
- Pass to the NRA Welfare Officer.
- Make a full written record of the disclosure on the day you receive the disclosure.
- Sign and date the record then pass to the NRA Welfare Officer immediately

Establishing the Basic Facts

The NRA Welfare Officer must clarify the basic facts to establish whether there is reasonable cause to suspect or believe that misconduct has occurred. If the basic facts support a suspicion or allegation of misconduct by a member, the matter will be dealt with in accordance with the NRA Disciplinary Procedure.



Responding to a Suspicion or Allegation of Abuse against someone who is Not a Member of the Club or Centre

All allegations of abuse must be taken seriously. If a child or vulnerable adult says or indicates that he/she is being abused or information is obtained which gives concern that a child or vulnerable adult is being abused, you must react as soon as possible that day in line with the following procedures.

Where there is uncertainty about whether the concern relates to abuse or misconduct, the NRA Welfare Officer must firstly be consulted for advice on the appropriate course of action.

If the NRA Welfare Officer is unavailable, external agencies such as the Police and Social Work Department must be consulted for advice. This is important because they have an overview of child protection issues and they may well have other information that together causes concern.

On receiving information about a non-member that leads to a suspicion or allegation of abuse:

- Listen to the child or vulnerable adult (see How to Listen to Disclosures).
- Pass your concerns to the Social Work Department or the Police in the area where the abuse is alleged to have occurred immediately (these are available 24 hours a day). Act on any advice given. At the earliest opportunity tell the NRA Welfare Officer about the action taken.
- Make a full written record of what has been seen, heard and/or told as soon as possible in the child/vulnerable adults' own words. The information must, where known, include the following:

Name of child/vulnerable adult.

Age, date of birth of child/vulnerable adult.

Home address and telephone number of the child/vulnerable adult.

The nature of the allegation in the child/vulnerable adult's own words.

Any times, dates or other relevant information.

Whether the person making the report is expressing their own concern or the concerns of another person.

The child/vulnerable adults' account, if it can be given, of what has happened and how any injuries occurred.

The nature of the allegation (include all of the information obtained during the initial account e.g. time, date, location of alleged incident).

A description of any visible (when normally dressed) injuries or bruising, behavioural signs, indirect signs (do not examine the child/vulnerable adult).

Details of any witnesses to the incident.

Whether the child/vulnerable adults' parents/guardians/carers have been contacted.

Details of anyone else who has been consulted and the information obtained from him or her.

If it is not the child/vulnerable adult making the report, whether the child/vulnerable adult has been spoken to, if so what was said.

Record, sign and date on the day what you have seen, heard or been told.

If making an electronic copy do not save to the hard drive or floppy disk. Print off the record, sign and date, then delete the electronic copy, that day.

Pass the record to the Social Work Department or the Police and NRA Welfare Officer.

Remember: Listen; Respond; Report and Record



Responding to a Suspicion or Allegation of Abuse against a Member of the Club or Centre

The feelings caused by the discovery of potential abuse by a member will raise different issues, e.g. disbelief that a member would act in this way. It is not the responsibility of a member to take responsibility or to decide whether or not a child or vulnerable adult has been abused. However, as with allegations against non-members, it is the responsibility of the individual to act on any concerns. Any information that raises concern about the behaviour of a member towards a child or vulnerable adult must be passed on as soon as possible that day, in accordance with these procedures. No member in receipt of such information shall keep that information to himself/ herself or attempt to deal with the matter autonomously.

These Procedures aim to ensure that all suspicions and/or allegations of abuse against a member are taken seriously and are dealt with in a timely and appropriate manner. They must be read in conjunction with the NRA Disciplinary Procedures.

On receiving information about a member that leads to a suspicion or allegation of abuse:

Listen to the child or vulnerable adult as detailed earlier, How to Listen to Disclosures.

Pass your concerns to the NRA Welfare Officer on the day or if not available, the Social Work Department or the Police in the area where the abuse is alleged to have occurred (these are available 24 hours a day).

Act on any advice given.

Make a full written record of what has been seen, heard and/or told as soon as possible in the child/vulnerable adults' own words.

Sign and date the record including what you have seen, heard or been told, that day.

If making an electronic copy do not save to the hard drive or floppy disk. Print the record, sign and date, then delete the electronic copy, that day.

Pass the record to the NRA Welfare Office and the Social Work Department or Police.

Important Note:

Where the concern is about the Club or Centre Welfare Officer it must be reported to the Club or Centre Chairman or direct to the NRA

Actions for the Club or Centre Welfare Officer when Concerns are reported

Before taking any action the Club or Centre Welfare Officer must always seek advice from the NRA Welfare Officer, Police or Social Work Department. Thereafter:

Establish Basic Facts

- the Club or Centre Welfare Officer must initially clarify the basic facts to establish whether there is reasonable cause to suspect or believe that a member may have abused a child and/or vulnerable adult.

Important Notes:

This may necessitate the child (ren) or vulnerable adult(s) involved being asked some basic, open-ended, non-leading questions solely with a view to clarifying the basic facts.

It may also be necessary to ask similar basic questions of other children, or other appropriate individuals e.g. coaches. After seeking advice from the NRA Welfare Officer, Police and/or Social Work Department, the parents/guardians may be approached to provide consent to speak to a child/vulnerable adult.

Advice must be sought from the NRA Welfare Officer, Police and/or Social Work Department as to whether the member about whom the allegation has been made may be approached as part of the initial enquiry.

This process will not form part of the disciplinary investigation



Making a Referral in Cases of Suspected and/or Alleged Abuse

- If the basic facts support a suspicion or allegation of abuse:

The NRA Welfare Officer will refer the suspicion and/or allegation to the Social Work Department and the Police, as soon as possible that day.

Appropriate steps may be required to ensure the safety of the child (ren) or vulnerable adult(s) who may be at risk.

A record should be made of the name and designation of the Social Work Department member of staff or the Police Officer to whom the concerns were passed, together with the time and date of the call, in case any follow up is required.

Following advice from the Social Work Department and/or Police, the parent/guardian of the child or vulnerable adult should be contacted as soon as possible.

Important Note:

Reporting of the matter to the Police or Social Work Department must not be delayed by attempts to obtain more information. A Referral for Reporting Suspicions and/or An Incident Report Form must be completed as soon as possible that day. Where possible, a copy of this form must be sent to the NRA Welfare Officer, Police and Social Work Department within 24 hours.

Possible Outcomes following advice from Police

Where the initial enquiry reveals that there is reasonable cause to suspect or believe that a member has abused a child and/or vulnerable adult there will be an investigation. There are three types of investigation that can result:

A disciplinary investigation

A child protection investigation

A criminal investigation

Following advice from the Police, disciplinary action may be taken in cases where a criminal investigation is ongoing provided sufficient information is available to enable a decision to be made and doing so does not jeopardise the criminal investigation.

See the Procedures summarised in the Flowchart.

Managing the Member Against Whom the Allegation has been made

Following advice from the Police, if the decision is made that the member against whom the allegation has been made is to be informed, the member should be told an allegation has been made which suggests abuse.

It is essential to preserve evidence for any criminal proceedings while at the same time safeguarding the rights of the member.

Suspension

Suspension is not a form of disciplinary action. The member may be suspended whilst an investigation is carried out.

Suspension will be carried out by NRA Exec. in accordance with NRA Rules and Disciplinary Procedures.

At the suspension interview the member will be informed of the reason suspension is taking place and given the opportunity to give a statement should he/she wish.

Notification of the suspension and the reasons will be conveyed in writing to the member in accordance with NRA Rules and Disciplinary Procedures.



Managing Allegations

Where after investigation, the allegation is unfounded or malicious the member will receive an account of the circumstances and/or investigation and a letter confirming the conclusion of the matter. The member involved may wish to seek legal advice.

All records pertaining to the circumstances and investigation will be securely stored.

Allegations of previous abuse.

The NRA, as a responsible organisation, strive to ensure that people who have a record of abusing children may not become members and thus gain access to their targets. This is covered in the requirement for new and renewing members to sign a declaration to the effect that they accept all of the rules and policies of the NRA (including this one). Anyone who has a previous criminal conviction for offences related to abuse against children is automatically excluded from membership and from working with children.

However all cases of abuse may not be reported to the Criminal Records Bureau (CRB) immediately and may only form part of any check some time after the event/conviction. Where allegations of a disqualifying criminal record are made, the organisation should follow the above procedure. This is to minimise the risk to other children in the sport.

Managing Allegations of Historical Abuse

Allegations of abuse may be made some time after the event e.g. an adult who was abused as a child by a member who still currently has significant with children. Where such an allegation is made the procedures for managing allegations of abuse must be followed.

Self-Declaration

Members in positions within an NRA Club or Centre that involve significant contact with children or vulnerable adults in coaching and supervision are typically coaches, officials and Club or Centre Officers. For such members, as a minimum requirement, a Self-Declaration should be completed. This would ask for any information about a criminal record or other matter that has a bearing on their suitability to have significant contact with children to be revealed (e.g. previous investigations by police or social services or disciplinary investigations in relation to contact with children).

Criminal Records Bureau (CRB) checks

This is a more reliable way to determine whether the Criminal Records Bureau holds any relevant information on a member. Both these procedures are flawed. Self-declaration relies on the honesty of the applicant to reveal information in full. CRB checks are only valid on the day of issue.

Both procedures can only reveal past history - that they have been caught.

Good Practice and observation

This is the most reliable way to strive to ensure the safety of all vulnerable people within the NRA Club or Centre environment. For Club or Centres adopting good practice, following the guidelines of the Policy, this will promote vigilance where inappropriate behaviour and early signs of potential problems can be spotted and dealt with. Certainly Self-Declaration must be adopted as a minimum requirement;

CRB checks are another process that Club or Centres can consider if appropriate. It is important to emphasise that the absence of any relevant disclosure emerging from this vetting process does not guarantee that the individual is safe to have significant contact with children, so it should not be relied on excessively. It is only one of a number of factors in the assessment of a persons' suitability.

For more information of the Self-Declaration process and the procedure for obtaining Criminal Records Bureau disclosures, contact the NRA HQ



Sharing concerns with Parents, Guardians or Carers

Where it is **NOT** Abuse

There is always a commitment to work in partnership with parents/guardians/carers where there are concerns about a child/vulnerable adult. Therefore in most situations, not involving the possibility of the abuse of a child or vulnerable adult, it would be important to talk to parents/guardians/carers to help clarify any initial concerns. For example, if a child or vulnerable adult seems withdrawn, he/she may have experienced an upset in the family, such as a parental separation, divorce or bereavement. Common sense is advised in these situations however advice should be sought from the NRA Welfare Officer if there is any uncertainty about the appropriate course of action.

Allegations of Abuse

There are circumstances in which a child or vulnerable adult might be placed at even greater risk if concerns are shared e.g. where a parent/guardian/carer may be responsible for the abuse or not able to respond to the situation appropriately. In all cases of suspected or alleged abuse, advice and guidance must first be sought from the NRA Welfare Officer, the local Social Work Department or the Police as to who contacts the parents.

Complaints procedures

The Club or Centre Rounders Committee should ensure that there is a well-established complaint procedure in operation and that student and parents of players, where applicable, has easy access to the procedure

Protecting responsible members against accusations

This section relates to all coaches or assistant coaches engaged in coaching or player coaching programmes and to all play leaders, Umpires and Rounders Officers who take responsibility for others in the course of NRA activities. Although this is a sensitive and difficult issue, abuse has occurred within other institutions and may equally occur in a sports setting. We must be prepared to accept the concerns of others and to respond to them with compassion and do everything we can to re-assure them of the safety of the children in our care. We should also be aware that abuse occurring outside of our Club or Centre might be reported to us by those who came to feel safe and protected in our care - We have a duty to respond to this sort of cry for help from a member.

It does happen that responsible members may have allegations made against them by players, parents or other club members. Such allegations should only be taken seriously if the accusers are prepared to be identified and put their suspicions in writing. However - whichever way a disclosure is made it should be reported to the appropriate authority for further investigation - **remember that you are not qualified to decide when NOT to follow up any disclosure.**

It is crucial that those involved in sport are aware of this possibility and that all allegations are taken seriously and appropriate action taken.

There may be circumstances where allegations arise from poor practice rather than abuse, but those responsible should always record the allegation and consult with senior colleagues such as Regional Staff or NRA HQ and gain advice from the NRA Welfare Officer, Social Services, Police or the NSPCC if there is any suspicion or doubt about the presence of abuse.

The NRA assures all members that it will fully support anyone who, in good faith, reports their concerns about abuse that may be occurring.



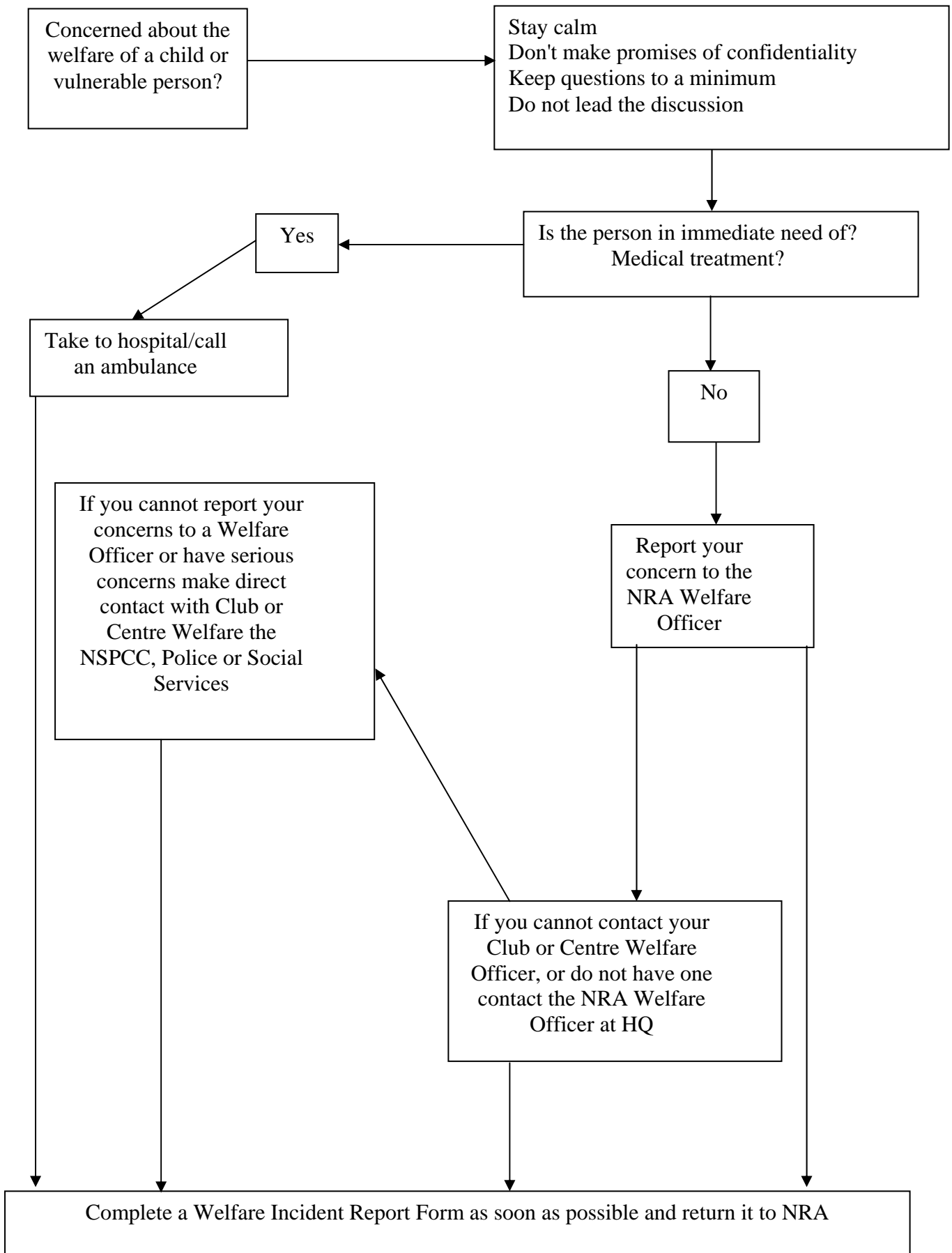
ACTIONS TO TAKE

If the allegation is clearly one solely about poor practice then the person in charge may deal with the matter or seek advice from the Regional Staff or directly from NRA HQ. Any suspicion that a child may have been abused by a responsible member should be reported to the Rounder Officer/person in charge who will take such steps as considered necessary to ensure the safety of the child in question and any other children who may be at risk. The person in charge should contact the NRA Welfare Officer via HQ for further support & advice.

It is rare that an incident will fall entirely within one of the above categories; it is more likely that an element of both will be present. In this case please treat it as suspicion of abuse (it is better to be safe than sorry!) This may involve the temporary suspension from similar activities of the responsible member - but in no way implies or infers any guilt. It is merely a way of removing all concerned from possibly awkward situations until a satisfactory explanation is found. The person in charge should notify the Welfare Officer at NRA HQ who will then deal with any possible media enquiries. Every effort should be made to ensure that confidentiality is maintained for all concerned. If the person in charge is the subject of the suspicion then the Welfare Officer at NRA HQ must be informed directly and they will then be responsible for taking the action outlined above. Ensure that all stages are written down accurately (please try to use the words that the abuser used and not try to "clarify" the discussion by imposing your own words.

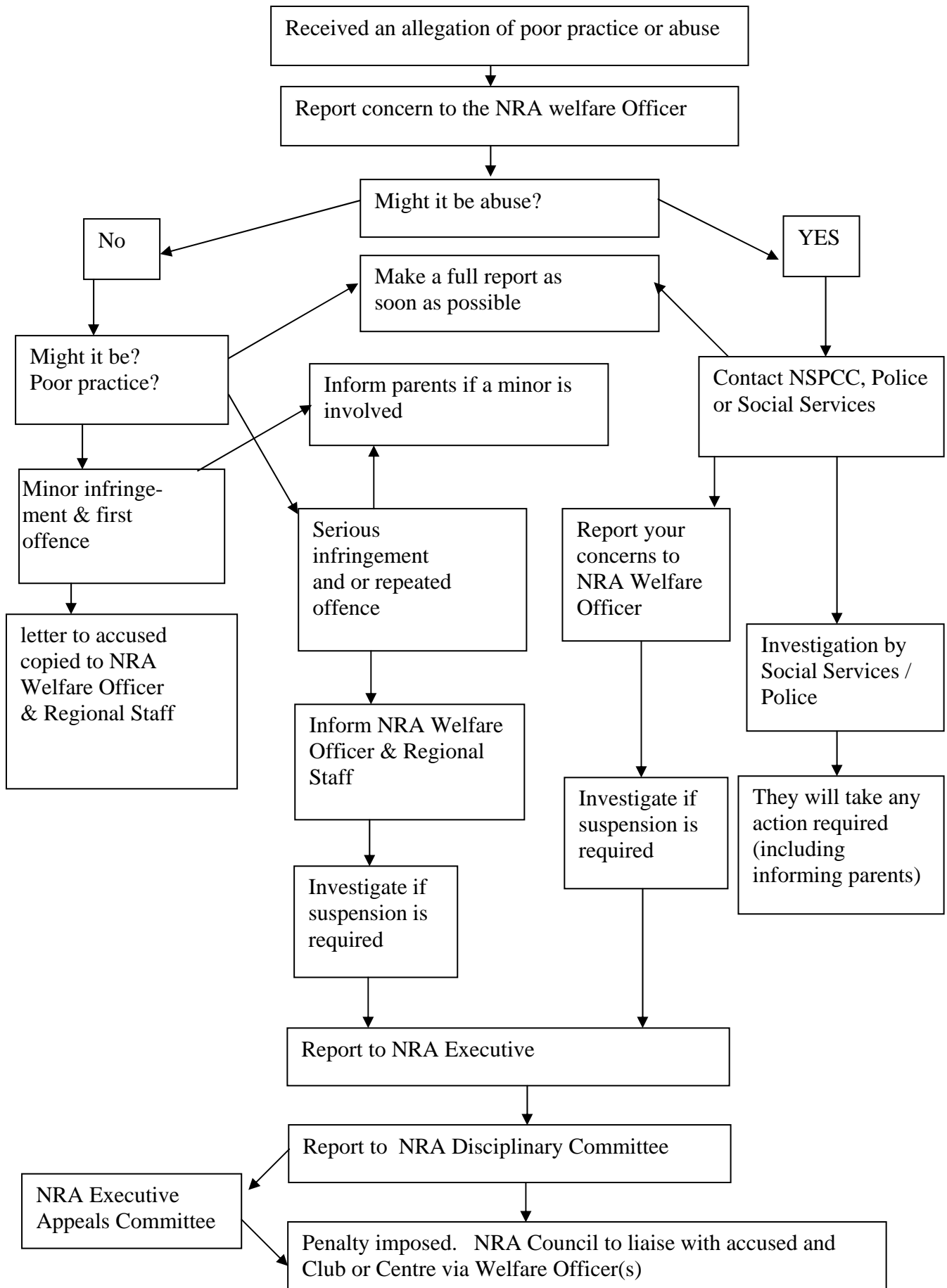


What to do if you suspect abuse





What to do if you are a Welfare Officer





Appendixes

- 1 Legal Framework**
- 2 Sources & Contacts**
- 3 Incident Report Form**
- 4 Application for Photography**
- 5 Photography Consent Form**
- 6 Conditions of NRA and Club or Centre Membership**
- 7 Expulsion Procedure**



Appendix 1

Legal Framework

The NRA Welfare of Vulnerable People Policy and supporting Procedures are based on the following legislation and guidance:

- 1 Children (Scotland) Act 1995
- 2 Human Rights Act 1998
- 3 Rehabilitation of Offenders Act 1974
- 4 Rehabilitation of Offenders Act 1974 (Exceptions Order) 1975
- 5 Criminal Procedure (Scotland) Act 1995
- 6 Protecting Children 'A Code of Practice for Voluntary Organisations in Scotland Working with Children and Young People,' 1995
- 7 Sex Offenders Act 1997
- 8 Sexual Offences (Amendments) Act 2000
- 9 Data Protection Act 1998
- 10 Police Act 1997
- 11 Disclosure Scotland Code of Conduct Making Scotland Safer '(2002)
- 12 Disclosure Scotland Code of Conduct 'Protecting the Vulnerable by Safer Recruitment' (2002)
- 13 Protecting Children -A Shared Responsibility: Guidance on inter-agency co-operation, The Scottish Office 1998
- 14 UN Convention of the Rights of the Child 1992



Appendix 2 Sources and Contacts

NRA contact: NRA Welfare Officer, Alan Fergus.

0114 2480357

In England & Wales:

National Society for the Prevention of Cruelty To Children (NSPCC)

Publications and Information Unit, NSPCC,
Weston House,
42 Curtain Road,
London EC2A 3NH
Tel: 020 7825 2775
www.nspcc.org.uk
www.nspcc.org.uk/inform
The UK's only free, online specialised
child protection resource

Child Protection in Sport Unit (England)

NSPCC National Coaching Centre,
3 Gilmour Close,
Beaumont Leys,
Leicester LE4 1 EZ
Tel: 0113 234 7278
Email: cpsu@nspcc.org.uk
www.sportprotects.org.uk
Work in partnership with major sports organisations
to develop safeguards for children in sport.

Child Protection in Sport Unit (Northern Ireland)

NSPCC,
Jennymount Court,
North Derby Street,
Belfast BT15 3HN
Tel: 02890 351 135

Child Protection in Sport Unit (Wales)

NSPCC,
Unit 1 Cowbridge Court,
60 Cowbridge
Road West,
Cardiff CF5 5BS
Tel: 029 2083 8086

Sport England

16 Upper Woburn Place,
London WC1H 0QP
Tel: 020 7273 1500
www.sportengland.org
Sport England aims to lead the development of sport in
England by influencing and serving the public, commercial
and voluntary sectors.

Sport Council Northern Ireland

House of Sport,
Upper Malone Road,
Belfast BT9 5LA
Tel: 02890 381 222
www.sportni.org
The Sports Council for Northern Ireland aims to make
sport happen for you.

The Sports Council for Wales Cyngor Chwareon Cymru,

Sophia Gardens,
Cardiff
CF11 9SW
Tel: 02920 300 500
www.sports-council-wales.co.uk

The Sports Council for Wales is the national
organisation responsible for developing and promoting
sport and recreation.

Sportscoach UK

114 Cardigan Road,
Leeds LS6 3BJ
Tel: 0113 2744802
Guiding the development and implementation of a
coaching system, recognised as a world leader, for all
coaches at every level in the UK.

Criminal Records Bureau

PO Box 91,
Liverpool L69 2UH
Helpline: 0870 90 90 811
www.crb.gov.uk

An executive agency of the Home Office - is set up to
help organisations make safer recruitment decisions.
www.homeoffice.gov.uk

www.disclosure.gov.uk

Enables organisations to make more thorough
recruitment checks, particularly for positions that involve
regular contact with children and vulnerable adults.

The Department of Health website of ACPCs

www.doh.gov.uk/acpc
Provides information about Area Child Protection
Committees (ACPCs) and the inter-agency work they
undertake to safeguard children in their area from abuse
and neglect. www.doh.gov.uk/qualityprotects/index.htm
A key part of the Governments' wider strategy for
tackling social exclusion. Focusing on working with
some of the most disadvantaged and vulnerable
children in our society.

Home Office

www.homeoffice.gov.uk
The Government department responsible for
internal affairs in England and Wales. The purpose; to
work with individuals and communities to build a safe,
just and tolerant society enhancing opportunities for all
and in which rights and responsibilities go hand in hand,
and the protection and security of the public are
maintained and enhanced.



In Scotland:

Volunteer Development Scotland

Laura Baird
Policy Officer
Stirling Enterprise Park
Stirling FK7 7RP
Tel:01786 479 593
www.vds.org.uk

Angus Council

Alastair Wilson
Head of Leisure Services
Angus Council
County Buildings
Market Street
Forfar DD8 3WA
Tel:01307 473 345
wilsona@angus.gov.uk

CHILDREN 1ST

Kathleen McNulty
Child Protection in Sport Development Worker
Learning and Teaching Scotland
74 Victoria Crescent Road
Glasgow G12 9JN
Tel:0141 339 4005
www.children1st.org.uk
Kathleen.McNulty@children1st.org.uk

Association of Chief Police Officers in Scotland

Iain MacLeod
Detective Chief Superintendent
Tayside Police Headquarters
PO Box 59
West Bell Street
DD1 9JU
Tel:01382 223 200
www.taysidepolice.police.uk

National Coaching Organisation for Sport Recreation and Allied Occupations

Ashley Pringle
Programme Manager
SPRITO Scotland
Division of Media, Language & Leisure Management
Glasgow Caledonian University
Cowcaddens Road,
Glasgow G4 0BA
Tel:0141-331-8484
www.SPRITO.org.uk

sportscotland

Rose Challies
Ethics Manager
Caledonia House
South Gyle
Edinburgh EH12 9DQ
Tel:0131 317 7200 www.sportscotland.org.uk
child.protection@sportscotland.org.uk

Scottish Sports Association

Joanne Waddell
Executive Administrator
Caledonia House
South Gyle
Edinburgh EH12 9DQ
Tel:0131 339 8785
www.scottishsportsassociation.org.uk

Scottish Association of Local Sports Councils

David Arnott
Administrator
1 Lumsdaine Drive
Dalgetty Bay KY11 9YU
Tel:01383 820 950
www.salsc.org

Convention of Scottish Local Authorities

Sylvia Murray
Policy Officer
Rosebery House
Haymarket Terrace
Edinburgh EH12 5XZ
Tel:0131 474 9251
www.cosla.gov.uk

Edinburgh and the Lothians Child Protection Office

Martin R T Henry Child Protection Co-ordinator
Shrubhill House
Shrub Place
Edinburgh EH7 4PD
0131 553 8294
martin.henry@edinburgh.gov.uk

Other Useful Contacts:

ParentLine Scotland

0808 800 2222

NSPCC Child Protection Helpline

0808 800 5000

Childline Scotland

0800 1111



Appendix 3

NRA Welfare Incident Report

This form must be completed as soon as possible after receiving information that causes suspicion or an allegation of the abuse of a child or vulnerable adult. This must be passed to the NRA Welfare Officer and the Social Work Department or the Police as soon as possible after completion. Do not delay by attempting to obtain information to complete all the details. Informing NRA HQ acts to offer a safeguard to all concerned.

Note: Confidentiality must be maintained at all times. Information must only be shared on a need to know basis i.e. only if it will protect the child. Do not discuss this incident with anyone other than those who need to know.

Continue on a separate sheet of paper if required and attach securely to this form. This report has been compiled for the best interests and safety of any NRA member providing/receiving instruction/supervision in the sports of and Rounders.

Details of person making report

Name:
Position:
Contact telephone number:
Mobile telephone number

Details of Child/Vulnerable Adult

Name:
Date of Birth:
Address:
Contact telephone number:
Names and address of parents/guardian/carers:

Details of person about whom there is concern

Name:
Position:
Date of Birth:
Address:
Relationship to child/vulnerable adult



If you are reporting this alleged incident on behalf of someone else, please provide details of that person:

Name:
Position:
Address:
Contact telephone number:
Date this person advised you of alleged incident:
Record here the information you were given from this person about the alleged incident:

Details of the alleged incident

Date of alleged incident:
Time:
Place:
Names and addresses of witnesses:
Describe in detail what happened:



Describe in detail visible injuries/bruises and concerning behaviour of the child/vulnerable adult, if any:
(use diagrams if this helps you to describe)

Was the child/vulnerable adult asked what happened: YES/NO
If yes, record exactly what the child/vulnerable adult said in their own words and any questions asked if the situation needed clarifying:



Details of action taken

Detail what action, if any, has been taken following receipt of this information:

ONLY AFTER SEEKING ADVICE FROM THE POLICE/SOCIAL WORK DEPARTMENT, were the child/vulnerable adults parent's/carers contacted? If YES, record the time and date.

Details of external agencies contacted

Police	Police station contacted: Name and contact number: Advice received:
Social Work Department	Social Work Dept: Name and contact number: Advice received:
Other	Advice received: Name of organisation: Name and contact number:



Other information

Record any other information you have about this matter (it is important that all information is passed on even that which you think is not important or helpful).

Signature: _____

Print name: _____

Date: _____

Where a referral has been made to the Police and Social Work Department a copy of this form must be sent to them as soon as possible.

Send to:- NRA Welfare Officer/Police/Social Services.



BREACHES OF WELFARE

There are many different types of misconduct that adversely affect someone's welfare. However, These usually have the common result of victimising one or more persons. Of particular concern to the NRA are welfare violations that affect children, young people and vulnerable adults. Such violations include child abuse, harassment or abuse, extortion, fraud and cheating (see Figure 2). In addition to causing personal harm, any misconduct is likely also to bring the sport of Rounders into disrepute.

Figure 2 Factors that promote or undermine welfare

Factors that promote welfare ...

Self-respect/ esteem

Independence/ autonomy

Self-awareness

Self-fulfilment

Attention/ interest

Pastoral support

Support and friendship

Thorough risk assessment

Equal treatment

Trust and co-operation

Privacy and dignity

Shelter and warmth

Food/nutrition

Rest, sleep and recuperation

Factors that undermine welfare ...

Abuse of trust or power
Fraud, cheating, blackmail and unfair play
Stress arising from unrealistic expectations
Misrepresentation, plagiarism, libel or slander
False or malicious allegations
Doping, misuse of performance enhancing substances, alcohol or drugs
Bullying and intimidation
Discrimination and inequality related to (dis)ability, class, race, sex, culture and social class
Favouritism/ bias of any kind
Sexual, racial or homophobic harassment, initiation rituals or abuse
Neglect or failure to provide sustenance, career or social support
Overtraining or undue pressure leading to burn out, eating disorders, osteoporosis, over-use injuries, body image distortion, injury or self harm, or premature retirement



Appendix 4

NRA Welfare Policy

Application to Photograph, Film or Video an Event or Activity Involving Children or Vulnerable Adults

The National Rounders Association is committed to the protection of children and vulnerable adults who are involved in sport.

The purpose of this application form is to ensure that anyone wishing to photograph, film or video a Rounders or activity where children or vulnerable adults are participating:

- # Secures the permission of the Club or Centre in advance of the event/activity
- # Commits the applicant to comply with NRA guidance on the use of photographic, film, video or other images of children which is contained in NRA Welfare of Vulnerable People Policy and Procedures
- # Allows children/vulnerable adults and their parents/guardians or carers to provide informed consent (in accordance with the NRA Welfare of Vulnerable People Policy and Procedures where possible we will not permit photographs, film, video or other images of children or vulnerable adults to be taken or used without the consent of the child/vulnerable adult and their parents/guardians or carers).

This application form must be completed and submitted to the Club or Centre Welfare Officer no later than 5 days before the event/activity.

Details of applicant

Name: _____

Address: _____

Telephone: _____ / _____

If you are applying on behalf of a company or other organisation please provide the following details:

Name of Company/organisation: _____

Contact Name: _____

Address: _____

Telephone: _____ / _____

In addition, when requested, please complete answers to the following:

What do you intend to use the photographs, film or video footage for?

Where will the photographs, film or video footage to be published or displayed?

When will this happen?

How will the photograph, film or video be processed?

How will the equipment be used?

Who will have access to the photographs, film or video footage?

Where will the photographs, film or video be stored?

How long will the photograph, film or video be kept?



Affirmation

I have read, understood and agree to comply with NRA guidance for the use of photographs, film video or other images of children/vulnerable adults contained in NRA Welfare of Vulnerable People Policy and Procedures.

I agree to comply with any conditions or restrictions on the taking and use of photographs, film or video deemed appropriate by NRA.

I understand and accept that any failure to comply with the aforementioned Policy and Procedures may prevent any future permission being granted and that any practices which are considered to place children or vulnerable adults at risk may be reported to the Police and/or Social Work Department.

I accept that at all times the Club or Centre reserves the right to prohibit the use of photography, film and/or video at any event or activity with which it is associated.

Signature of Applicant: _____

Print Name: _____

Signature of Company/organisation: _____

Print Name: _____

Position in organisation: _____

Date: _____ / _____ / _____

If the applicant is not a member of the Club or Centre, this form should be returned with photographic evidence of your identification e.g. copy of driving licence or passport.



Appendix 5

NRA Welfare Policy

Consent Form

For the Use of Photographs, Film or Video Recordings of Children or Vulnerable Adults

NRA is committed to the protection of children and vulnerable adults involved in sport. In accordance with the NRA Welfare of Vulnerable People Policy and Procedures, where possible the Club or Centre will not permit photographs, film, video or other images of children or vulnerable adults to be taken or used without the consent of the child/vulnerable adult and their parents/guardians or carers.

The Club or Centre will take all reasonable measures to ensure these images are used solely for the purposes for which they are intended. If you become aware these images are being used inappropriately you should inform Club or Centre Welfare Officer immediately.

The Club or Centre and/or NRA reserve the right at all times to prohibit the use of photography, film or video at any activity with which it is associated.

Child/Vulnerable Adult

I consent to photographing, filming or videoing my involvement in Rounders,

Signature _____

Print Name _____

Date _____ / _____ / _____

Parent/Guardian/Carer

I consent to the photographing, filming or videoing _____

Name of child: _____

involvement in the following activity: _____

as described to me.

Signature _____

Print Name _____

Relationship to child/vulnerable adult: _____

Date: _____ / _____ / _____



Appendix 6

Conditions of membership within the NRA

All reasonable steps must be taken to ensure unsuitable people are prevented from working with children and vulnerable adults.

Self Declaration

Members in positions within a NRA Club or Centre that involve significant contact with children and vulnerable people in coaching and supervision are typically coaches and Club or Centre Officers. For such members, as a minimum requirement, a Self-Declaration should be completed. This would ask for any information about a criminal record or other matter that has a bearing on their suitability to work with children to be revealed (e.g. previous convictions or investigations by police or social services or disciplinary investigations in relation to contact with children).

NRA Club or Centres positively adopting the Welfare Policy and good practice, can also include clauses in their Bye Laws agreeing to Criminal Records Bureau (CRB) checks for certain levels of members (Coaches, Officers etc.) if appropriate. When agreement within the Club or Centre in place, CRB checks will be available for members of all Club or Centres and this process is outlined in the publication: Self Declaration & CRB Procedures for Club or Centres.'



The Expulsion Process

What happens if a member has a conviction of an inappropriate nature or appears on a Protection of Children Act list?

If evidence that a NRA Member has a spent or current conviction of a nature that excludes membership or on a Protection of Children Act list, then The Expulsion Process must be followed:

1. Inform the NRA Welfare Officer with information of knowledge of current or past conviction of a member.
2. NRA HQ will obtain written evidence from CPS or Court records.
3. If the charge or conviction is of a nature that may make them unsuitable to remain a member of the NRA, then the member will be suspended from the NRA and Club or Centre with immediate effect by the NRA Welfare Officer.
4. The member will be advised that they have the right to appeal, in person or in writing at the next scheduled Exec. Meeting. If they wish to appear in person, they will have the right to be accompanied. The final decision to permanently expel the member will be ratified at that meeting.
5. The member and the Club or Centre Committee will be notified immediately of permanent expulsion and that the person is not eligible for future membership.
6. No further correspondence with the member will be entered into.

A member charged with an offence of an inappropriate nature or pending court proceedings?

1. Inform the NRA Welfare Officer with information of knowledge of pending court proceedings or an ongoing Police investigation of a member.
2. NRA HQ will obtain written evidence from CPS or Court records.
3. If the charge or conviction is of a nature that may make them unsuitable to remain a member of the NRA e.g. an offence that carries a custodial sentence., NRA will write to the member to invite an explanation in person or in writing to the Council within not less than 7 days. If they wish to appear in person, they will have the right to be accompanied.
4. If Council decide by two-thirds majority that the charge is of a nature that if convicted, will make them unsuitable to remain a member of the NRA, they can be immediately **SUSPENDED** from the NRA and the Club or Centre, awaiting the outcome of the case.
5. If acquitted, the member can apply to the Council to rescind the suspension and reinstate membership. It will be the responsibility of the Member to advise the NRA of the outcome of any Court proceedings. NRA Council will consider any application at the next scheduled meeting.

No person automatically has the right to become a member of the NRA.



Temporary or permanent expulsion of a member

